

## Synergy 21 LED Controller 0-10V \*Milight/Miboxer\*



Single color Controller für LED Streifen oder Panels  
Steuerbar mit Funkfernbedienung und/oder WLAN Controller für iOS und Android, beide separat erhältlich, siehe Zubehör

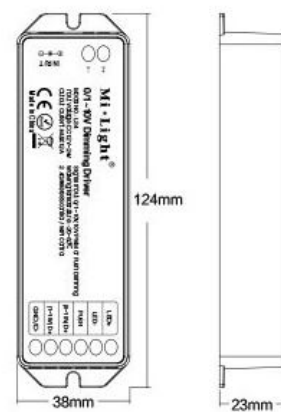
Input Voltage: DC12V~24V  
Output Current: Max 12A  
Dimming range: 0~100%  
Signal Input: 0/1~10V,10V PWM or Push Dimming  
Working Temperature: -20~60°  
Control Distance: 30m  
Size: 124\*38\*23mm

## Merkmale

Merkmal	Wert
Ampere:	12
CC oder CV:	CV
Dimmbar:	0-10V
Grösse:	124*38*23
Lichtfarbe:	single color

Merkmal	Wert
Gewicht:	0.1 Kg

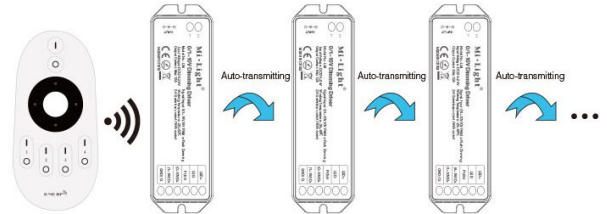
## Weitere Bilder



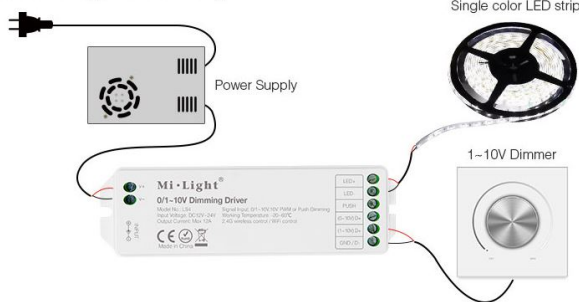


## Automatic Commands Transmitting Function

One 0/1~10V Dimming Driver can send the commands from the remote control to another, which makes the control distance limitless. (The distance from one light to another has to be within 30m)



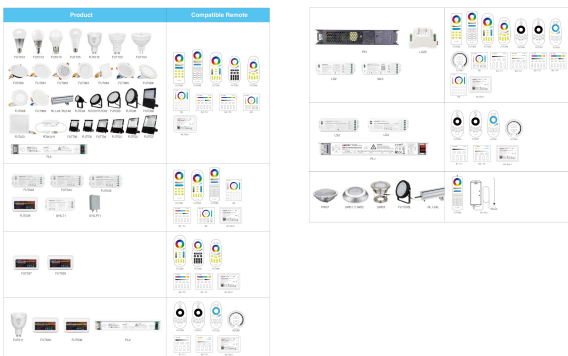
1~10V dimming panel connection diagram



Push button connection diagram



### COMPATIBLE REMOTE SHEET



## Zubehör

Art.-Nr.	Name
76730	Synergy 21 Netzteil - 12V 36W Hohlstecker
181054	Synergy 21 LED Fernbedienung WLAN Controller *Milight/Miboxer*