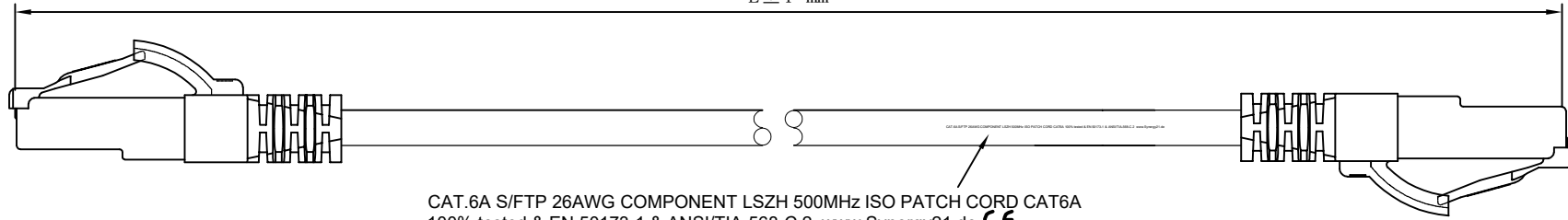
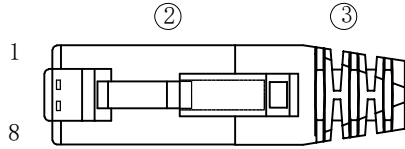


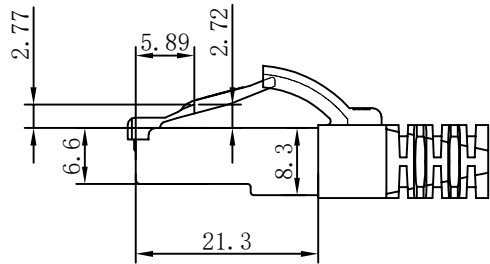
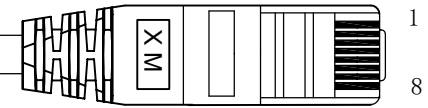
L ± T mm



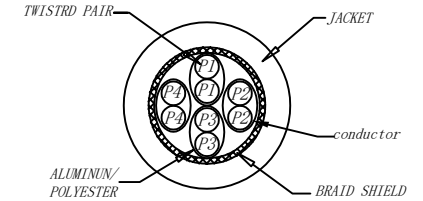
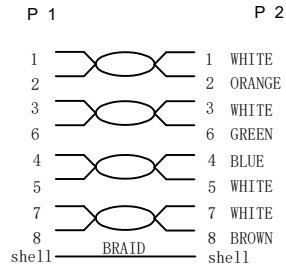
CAT.6A S/FTP 26AWG COMPONENT LSZH 500MHz ISO PATCH CORD CAT6A
100% tested & EN 50173-1 & ANSI/TIA-568-C.2 www.Synergy21.de **CE**



①



WIRING DIAGRAM



MATERIAL LIST:

| ③ | OVER MOLD | PVC 75A | 8PCS | |
|-----|------------|---|-------|--------|
| ○ | PLUG | RJ45 8P8C Shielded Plug, Pin Gold Plated 3u", Shell Nickel Plating , Transparent Blue | 2PCS | |
| ⊙ | CABLE | S/FTP CAT. 6A 26AWG (BC+AL-FOIL)*4PAIR+Braid (AL-MG)+ JACKET:LSZH OD:6.0±0.2MM | 1PCS | |
| NO. | PARTS NAME | SPECIFICATION STANDARD | QT' Y | REMARK |

NOTE:

- ELECTRICAL TEST:
 - 100% OPEN SHORT, MISS WIRE TEST
 - INSULATION RESISTANCE:DC 300V 10M Ohm;
 - CONTACTOR RESISTANCE:1 OHM per meter
- FLUKE TEST:Component test, ISO PATCH CORD CAT6A XXM
- Operating temperature:-20°C ~ + 75°C
- ROHS 3.0 AND REACH COMPLIANT
- Support PoE/PoE+/PoE++
- Packing:Synergy21 PE Bag+Label
- Minimum of the bending radius is 60mm
- Flame retardant (IEC60332-1-2)
 - Low smoke(IEC 61034)
 - Halogen free(IEC 60754-2)
- GHMT Certificate no. c7536b-22

| | | | | | | | | | | |
|-------|-----|---------------------------------|------------|------|--------------|------------------------------------|----------------------|------------|----------|----|
| | | Update label | 2022-09-07 | A3 | SYNERGY 21 | | | | | |
| Hasia | | change "ROSH 2.0" to "ROSH 3.0" | 2022-02-25 | A2 | | | | | CUSTOMER | |
| | | Add IEC60332-1-2 | 2021-01-23 | A1 | PRODUCT NAME | CAT. 6A S/FTP 26AWG LSZH COMPONENT | manufacture country: | CHINA | UNIT | MM |
| | | NEW | 2019-02-25 | A | DRAWNBY | CHECKBY | APPROVE | DATE | | |
| BY | CHK | REVISION RECORD MODIFICATIONS | DATE | REV. | SYNERGY 21 | SYNERGY 21 | SYNERGY 21 | 2019-02-25 | | |

Chart:

| COLOR:GREY RAL 7035 | | |
|---------------------|-----------|------------------|
| ITEM | LENGTH/mm | PACKING |
| S217111 | 500±15 | SYNERGY 21 A Bag |
| S217112 | 1000±20 | SYNERGY 21 B Bag |
| S217113 | 1500±30 | SYNERGY 21 B Bag |
| S217114 | 2000±30 | SYNERGY 21 B Bag |
| S217115 | 3000±50 | SYNERGY 21 B Bag |
| S217116 | 5000±100 | SYNERGY 21 B Bag |
| S217117 | 7500±200 | SYNERGY 21 B Bag |
| S217118 | 10000±200 | SYNERGY 21 C Bag |
| S217119 | 15000±300 | SYNERGY 21 C Bag |
| S217120 | 20000±300 | SYNERGY 21 C Bag |

| COLOR:BLACK Pantone black 3C | | |
|------------------------------|-----------|------------------|
| ITEM | LENGTH/mm | PACKING |
| S217122 | 500±15 | SYNERGY 21 A Bag |
| S217123 | 1000±20 | SYNERGY 21 B Bag |
| S217124 | 1500±30 | SYNERGY 21 B Bag |
| S217125 | 2000±30 | SYNERGY 21 B Bag |
| S217126 | 3000±50 | SYNERGY 21 B Bag |
| S217127 | 5000±100 | SYNERGY 21 B Bag |
| S217128 | 7500±200 | SYNERGY 21 B Bag |
| S217129 | 10000±200 | SYNERGY 21 C Bag |
| S217130 | 15000±300 | SYNERGY 21 C Bag |
| S217131 | 20000±300 | SYNERGY 21 C Bag |

| COLOR:BLUE Pantone 647C | | |
|-------------------------|-----------|------------------|
| ITEM | LENGTH/mm | PACKING |
| S217133 | 500±15 | SYNERGY 21 A Bag |
| S217134 | 1000±20 | SYNERGY 21 B Bag |
| S217135 | 1500±30 | SYNERGY 21 B Bag |
| S217136 | 2000±30 | SYNERGY 21 B Bag |
| S217137 | 3000±50 | SYNERGY 21 B Bag |
| S217138 | 5000±100 | SYNERGY 21 B Bag |
| S217139 | 7500±200 | SYNERGY 21 B Bag |
| S217140 | 10000±200 | SYNERGY 21 C Bag |
| S217141 | 15000±300 | SYNERGY 21 C Bag |
| S217142 | 20000±300 | SYNERGY 21 C Bag |

| COLOR:WHITE RAL9003 | | |
|---------------------|-----------|------------------|
| ITEM | LENGTH/mm | PACKING |
| S217144 | 500±15 | SYNERGY 21 A Bag |
| S217145 | 1000±20 | SYNERGY 21 B Bag |
| S217146 | 1500±30 | SYNERGY 21 B Bag |
| S217147 | 2000±30 | SYNERGY 21 B Bag |
| S217148 | 3000±50 | SYNERGY 21 B Bag |
| S217149 | 5000±100 | SYNERGY 21 B Bag |
| S217150 | 7500±200 | SYNERGY 21 B Bag |
| S217151 | 10000±200 | SYNERGY 21 C Bag |
| S217152 | 15000±300 | SYNERGY 21 C Bag |
| S217153 | 20000±300 | SYNERGY 21 C Bag |



Cable ID: Item No **Test Summary: PASS**

Date / Time: 02-20-2019 9:08:01 Operator: QC Model: DTX-1800

Headroom: 1.7 1.2 dB NEXT(36.78) Software Version: 2.7800 Main S/N: 9781211

Test Limit: ISO Patch Cord Cat6A 0.5m Limits Version: 1.9500 Remote S/N: 9781212

Cable Type: Cat 7 S/FTP Calibration Date: Main Adapter: DTX-PC6A/MN ISO/IEC

NVP: 76.0% Main (Tester): 09/26/2016 Remote Adapter: DTX-PC6A/SR ISO/IEC

Remote (Tester): 09/26/2016



| | | | | | | | | | | |
|-------|-----|---------------------------------|------------|------|--------------|------------------------------------|----------------------|---------------|------|----|
| | | Update label | 2022-09-07 | A3 | SYNERGY 21 | | | | | |
| Hasia | | change "ROSH 2.0" to "ROSH 3.0" | 2022-02-25 | A2 | CUSTOMER | | ITEM NO. | See The Chart | | |
| | | Add IEC60332-1-2 | 2021-01-23 | A1 | PRODUCT NAME | CAT. 6A S/FTP PATCH CORD COMPONENT | manufacture country: | CHINA | UNIT | MM |
| | | NEW | 2019-02-25 | A | DRAWNBY | CHECKBY | APPROVE | DATE | | |
| BY | CHK | REVISION RECORD MODIFICATIONS | DATE | REV. | SYNERGY 21 | SYNERGY 21 | SYNERGY 21 | 2019-02-25 | | |

| COLOR:ORANGE Pantone 1575C | | |
|----------------------------|-----------|------------------|
| ITEM | LENGTH/mm | PACKING |
| S217155 | 500±15 | SYNERGY 21 A Bag |
| S217156 | 1000±20 | SYNERGY 21 B Bag |
| S217157 | 1500±30 | SYNERGY 21 B Bag |
| S217158 | 2000±30 | SYNERGY 21 B Bag |
| S217159 | 3000±50 | SYNERGY 21 B Bag |
| S217160 | 5000±100 | SYNERGY 21 B Bag |
| S217161 | 7500±200 | SYNERGY 21 B Bag |
| S217162 | 10000±200 | SYNERGY 21 C Bag |
| S217163 | 15000±300 | SYNERGY 21 C Bag |
| S217164 | 20000±300 | SYNERGY 21 C Bag |

| COLOR:PINK Pantone 212C | | |
|-------------------------|-----------|------------------|
| ITEM | LENGTH/mm | PACKING |
| S217166 | 500±15 | SYNERGY 21 A Bag |
| S217167 | 1000±20 | SYNERGY 21 B Bag |
| S217168 | 1500±30 | SYNERGY 21 B Bag |
| S217169 | 2000±30 | SYNERGY 21 B Bag |
| S217170 | 3000±50 | SYNERGY 21 B Bag |
| S217171 | 5000±100 | SYNERGY 21 B Bag |
| S217172 | 7500±200 | SYNERGY 21 B Bag |
| S217173 | 10000±200 | SYNERGY 21 C Bag |
| S217174 | 15000±300 | SYNERGY 21 C Bag |
| S217175 | 20000±300 | SYNERGY 21 C Bag |

| COLOR:GREEN Pantone 3278C | | |
|---------------------------|-----------|------------------|
| ITEM | LENGTH/mm | PACKING |
| S217177 | 500±15 | SYNERGY 21 A Bag |
| S217178 | 1000±20 | SYNERGY 21 B Bag |
| S217179 | 1500±30 | SYNERGY 21 B Bag |
| S217180 | 2000±30 | SYNERGY 21 B Bag |
| S217181 | 3000±50 | SYNERGY 21 B Bag |
| S217182 | 5000±100 | SYNERGY 21 B Bag |
| S217183 | 7500±200 | SYNERGY 21 B Bag |
| S217184 | 10000±200 | SYNERGY 21 C Bag |
| S217185 | 15000±300 | SYNERGY 21 C Bag |
| S217186 | 20000±300 | SYNERGY 21 C Bag |

| COLOR:YELLOW Pantone 135C | | |
|---------------------------|-----------|------------------|
| ITEM | LENGTH/mm | PACKING |
| S217188 | 500±15 | SYNERGY 21 A Bag |
| S217189 | 1000±20 | SYNERGY 21 B Bag |
| S217190 | 1500±30 | SYNERGY 21 B Bag |
| S217191 | 2000±30 | SYNERGY 21 B Bag |
| S217192 | 3000±50 | SYNERGY 21 B Bag |
| S217193 | 5000±100 | SYNERGY 21 B Bag |
| S217194 | 7500±200 | SYNERGY 21 B Bag |
| S217195 | 10000±200 | SYNERGY 21 C Bag |
| S217196 | 15000±300 | SYNERGY 21 C Bag |
| S217197 | 20000±300 | SYNERGY 21 C Bag |

| COLOR:RED Pantone 199C | | |
|------------------------|-----------|------------------|
| ITEM | LENGTH/mm | PACKING |
| S217199 | 500±15 | SYNERGY 21 A Bag |
| S217200 | 1000±20 | SYNERGY 21 B Bag |
| S217201 | 1500±30 | SYNERGY 21 B Bag |
| S217202 | 2000±30 | SYNERGY 21 B Bag |
| S217203 | 3000±50 | SYNERGY 21 B Bag |
| S217204 | 5000±100 | SYNERGY 21 B Bag |
| S217205 | 7500±200 | SYNERGY 21 B Bag |
| S217206 | 10000±200 | SYNERGY 21 C Bag |
| S217207 | 15000±300 | SYNERGY 21 C Bag |
| S217208 | 20000±300 | SYNERGY 21 C Bag |

| | | | | | | | | | | |
|-------|-----|---------------------------------|------------|------|--------------|------------------------------------|----------------------|---------------|------|----|
| | | Update label | 2022-09-07 | A3 | SYNERGY 21 | | | | | |
| Hasia | | change "ROSH 2.0" to "ROSH 3.0" | 2022-02-25 | A2 | CUSTOMER | | ITEM NO. | See The Chart | | |
| | | Add IEC60332-1-2 | 2021-01-23 | A1 | PRODUCT NAME | CAT. 6A S/FTP PATCH CORD COMPONENT | manufacture country: | CHINA | UNIT | MM |
| | | NEW | 2019-02-25 | A | DRAWNBY | CHECKBY | APPROVE | DATE | | |
| BY | CHK | REVISION RECORD MODIFICATIONS | DATE | REV. | SYNERGY 21 | SYNERGY 21 | SYNERGY 21 | 2019-02-25 | | |

Zertifikat

Nr. z7536b-22

Auftraggeber:

ALLNET Computersysteme GmbH
Maistrasse 2
82110 Germering, Deutschland

Kategorie 6A

Prüfling(e):

Symmetrische Kupferschnur:
Patch cable RJ45, CAT6A 500Mhz, Xm, color S/FTP, component test with certificate, with test report, Synergy 21

Art.-Nr.:

S217144-S217153 (0,5m-20m) weiß
S217155-S217164 (0,5m-20m) orange
S217166-S217175 (0,5m-20m) rosa
S217122-S217131 (0,5m-20m) schwarz
S217199-S217208 (0,5m-20m) rot
S217188-S217197 (0,5m-20m) gelb
S217111-S217120 (0,5m-20m) grau
S217133-S217142 (0,5m-20m) blau
S217177-S217186 (0,5m-20m) grün

Bewertungsstandard(s):

ISO/IEC 11801-1 Ed.1.0 (2017-11)
IEC 61935-2 Ed.3.0 (2010-07)

Resultat:

Der Prüfling hält bei den im Prüfbericht genannten Prüfparametern die Grenzwerte der besagten Bewertungsstandards ein.

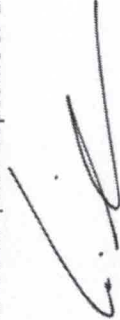
Symmetrische Kupferschnur, Kategorie 6A

GHMT Type Approval

Die bei der Prüfung ermittelten Ergebnisse beziehen sich auf den beschriebenen und vom Auftraggeber vorgelegten Prüfling. Zukünftige technische Änderungen der geprüften Produkte unterliegen dem Verantwortungsbe- reich der Hersteller.

Dieses Zertifikat verweist auf den ausführlichen Prüfbericht
Nr. R7536b-22 und ist nur in Verbindung mit diesem gültig.
Dieses Zertifikat ist nach Prüfdatum 24 Monate gültig.

Bexbach, 05. September 2022



Dipl.-Ing. Dirk Wilhelm
(Vorstandsvorsitzender)

GHMT AG

In der Kolling 320
D-66450 Bexbach

Postfach 11 16
D-66442 Bexbach

T: +49 6826 92 28-0
F: +49 6826 92 28-290

info@ghmt.de
www.ghmt.de



Durch die DAKKS nach DIN EN ISO/IEC 17025:2018 akkreditiertes Prüflaboratorium.
Die Akkreditierung gilt für die in der Urkunde (D-PL-17559-01-00) aufgeführten Prüfverfahren.

**HOCHVERFÜGBARKEIT IM GANZEN
BEDINGT PRÄZISION IM DETAIL.**